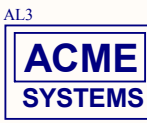


AL1

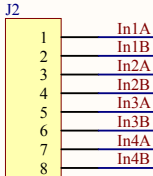
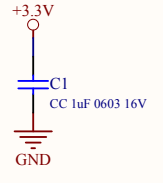
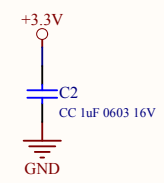
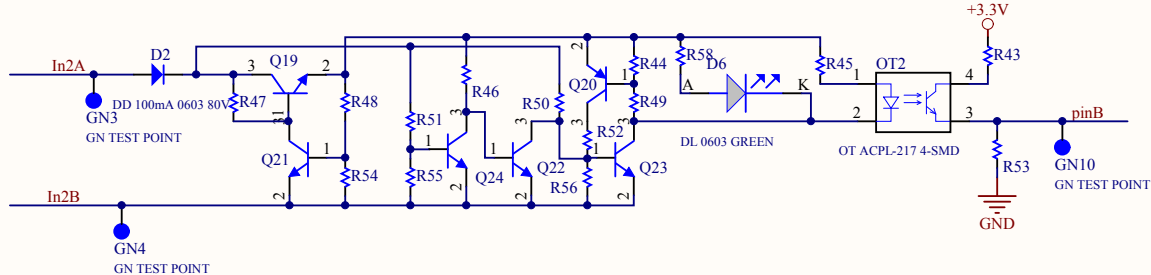
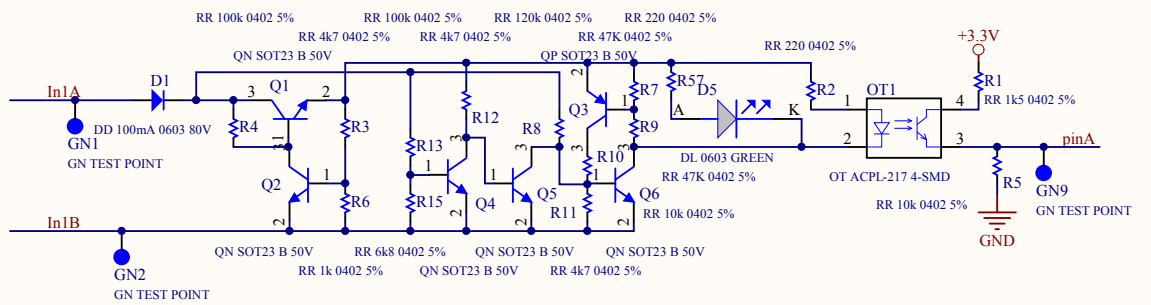
AL T.E. LOGO

AL2

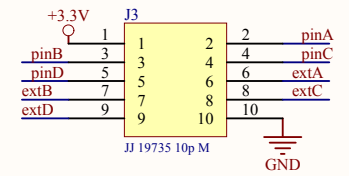
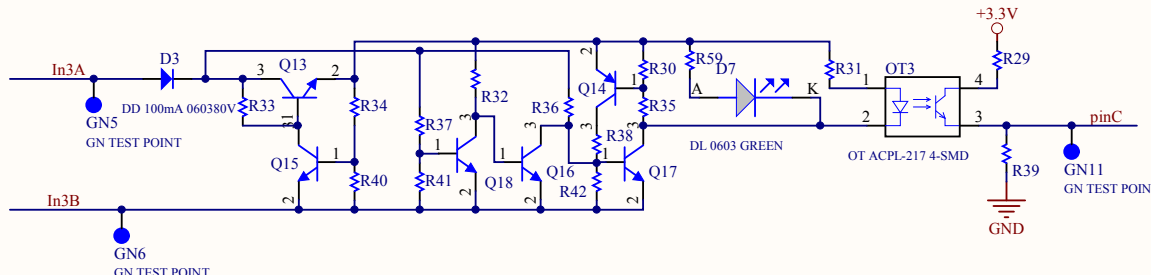
AL SYSTEM LOGO



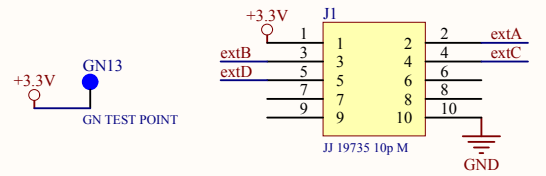
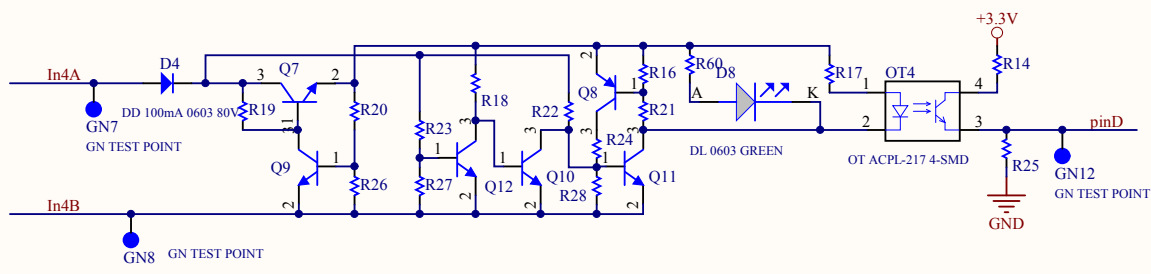
AL ACME LOGO



JJ 07566 8p M90



JJ 19735 10p M



JJ 19735 10p M

Title <b>Daisy 18</b>			ACME Systems srl
Size: A4	Number:	Revision: 1.0	Ing. Fabrizio Rinalduzzi Ing. Roberto Asquini
Date: 03/11/2011	Time: 10.25.42	Sheet 1 of 1	www.acmesystems.it
File: E:\ACME Projects\Altium\altium-frabs\Daisy 18\Daisy 18.SchDoc			